

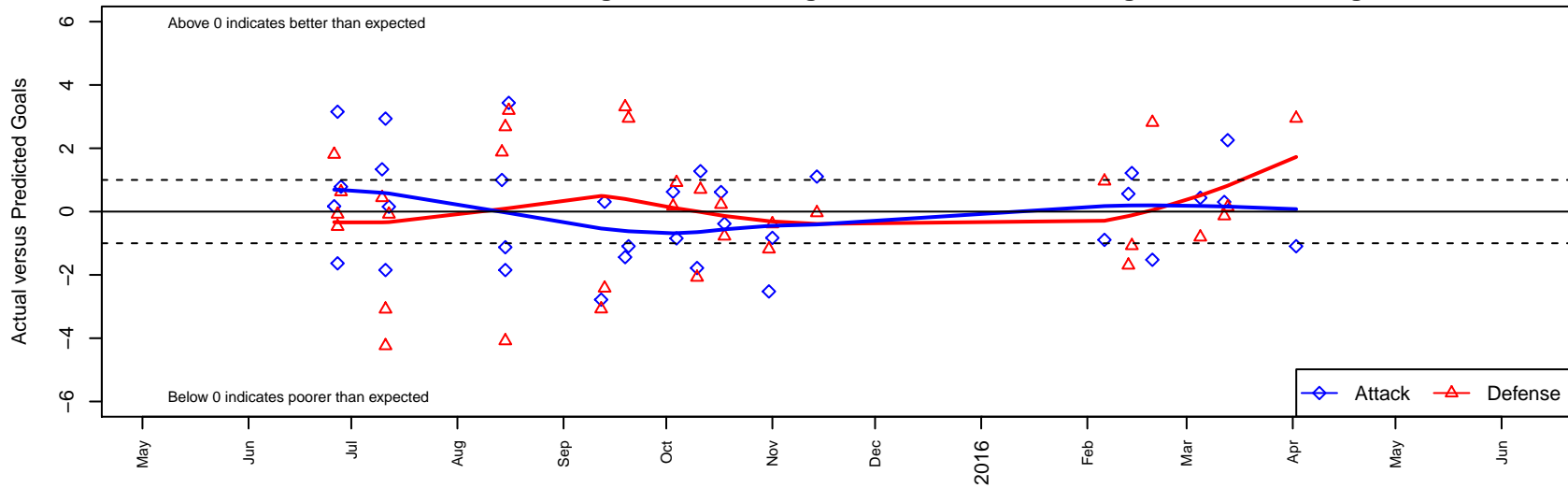
4-H Manchester U B03

, OR
 B03 total strength=684
 attack=1.05 defense=0.43
 fall league = PTT B03 Premier Silver
 spr league = Spr OYS B03 Premier White

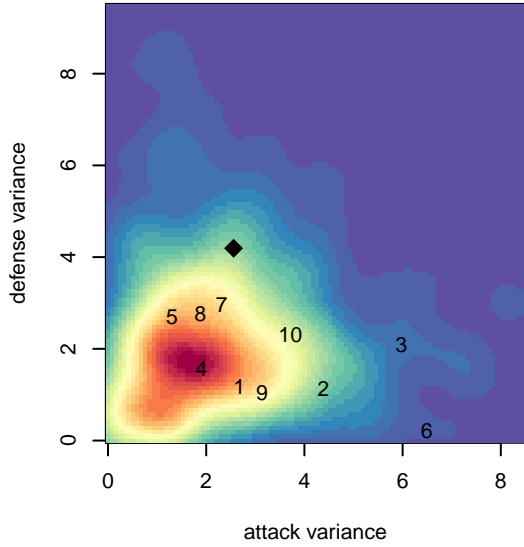
alt names used:
 4-H SK ManU B03
 4-H SK ManU B03
 4-H SK ManU B03
 4-H SK ManU
 4-H SK ManU

Venues played:
 2015 Capital Cup BU12 Gold
 2015 ETFC Adidas Cup U12
 2015 Mt Hood Challenge U12
 2015 PTT B03 Premier Silver
 2015 Spr OYS B03 Premier White

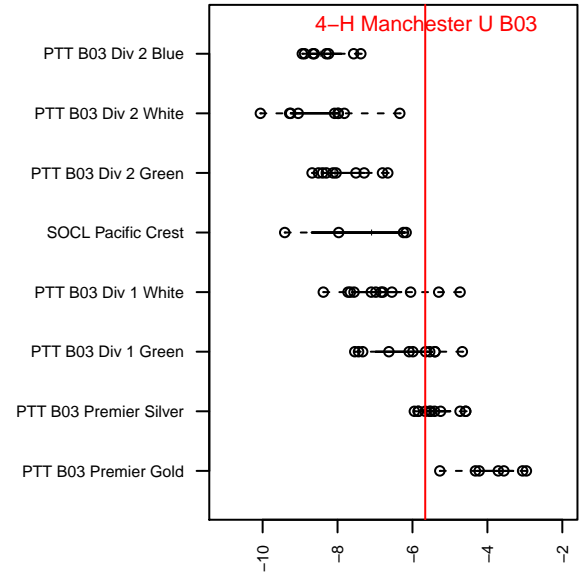
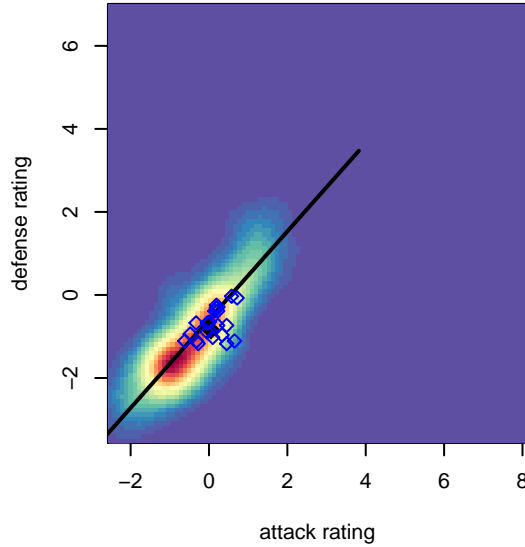
4-H Manchester U B03
 Dots are actual minus expected GF (blue circles) and GA (red triangles).
 Blue line is smoothed change in attack strength. Red is smoothed change in defense strength.



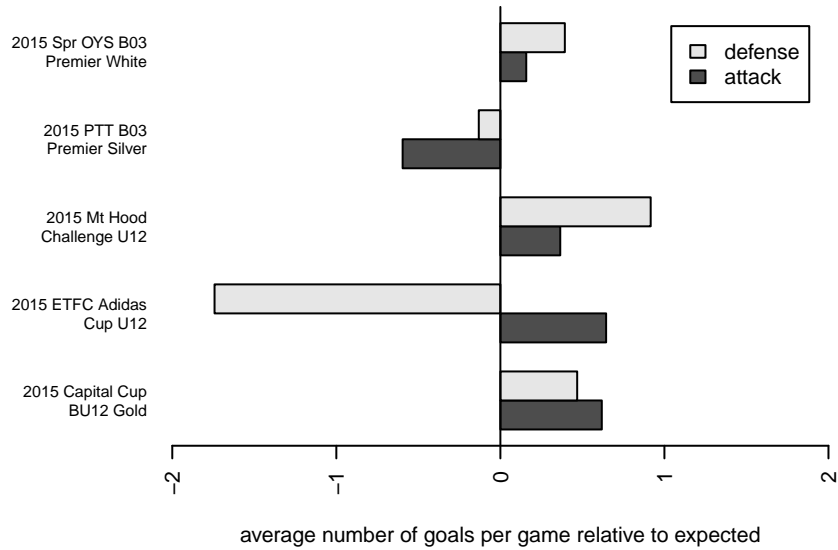
**attack and defense variance (black dot)
relative to other teams
and top 10 in region**



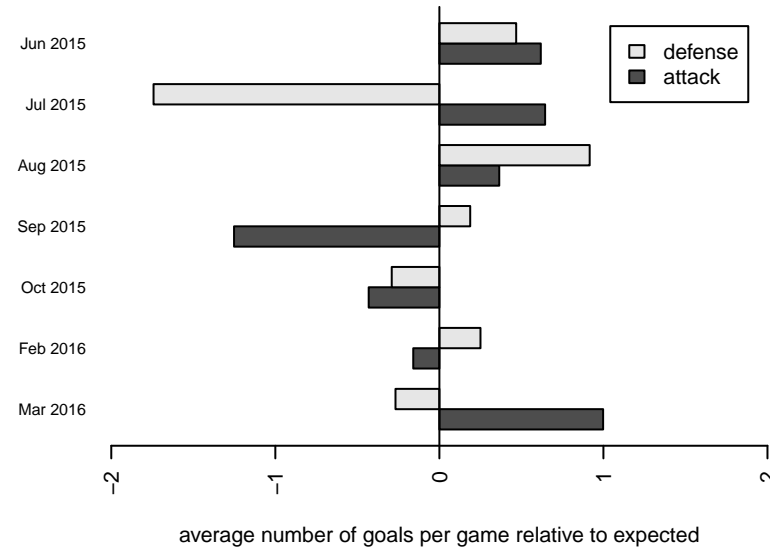
**attack and defense rating
relative to others at age
and all opponents in last 13 months**



Performance relative to 13 month average



Performance relative to 13 month average



| date | home | | away | | venue | pred.home | pred.away |
|------------|------------------------------------|---|----------------------------------|---|--------------------------------|-----------|-----------|
| 2016-04-02 | BSC Portland Black-Legends B03 | 0 | 4-H Manchester U B03 | 1 | 2015 Spr OYS B03 Premier White | 2.94 | 2.09 |
| 2016-03-13 | 4-H Manchester U B03 | 4 | Westside Timbers Samba B03 | 3 | 2015 Spr OYS B03 Premier White | 1.74 | 3.14 |
| 2016-03-12 | 4-H Manchester U B03 | 4 | FC Salmon Creek White B03 | 2 | 2015 Spr OYS B03 Premier White | 3.70 | 1.86 |
| 2016-03-05 | 4-H Manchester U B03 | 3 | Capital FC Timbers Red B03 | 4 | 2015 Spr OYS B03 Premier White | 2.57 | 3.19 |
| 2016-02-20 | 4-H Manchester U B03 | 1 | Aloha United Atletico Black B03 | 0 | 2015 Spr OYS B03 Premier White | 2.52 | 2.81 |
| 2016-02-14 | PCU Red 2 B03 | 3 | 4-H Manchester U B03 | 4 | 2015 Spr OYS B03 Premier White | 1.92 | 2.78 |
| 2016-02-13 | Washington Timbers Red B B03 | 5 | 4-H Manchester U B03 | 2 | 2015 Spr OYS B03 Premier White | 3.31 | 1.44 |
| 2016-02-06 | Crossfire Oregon Green II B03 | 1 | 4-H Manchester U B03 | 1 | 2015 Spr OYS B03 Premier White | 1.96 | 1.89 |
| 2015-11-14 | 4-H Manchester U B03 | 3 | Crossfire Oregon Green II B03 | 2 | 2015 PTT B03 Premier Silver | 1.89 | 1.96 |
| 2015-11-01 | 4-H Manchester U B03 | 2 | Portland Spartans FC Academy B03 | 4 | 2015 PTT B03 Premier Silver | 2.83 | 3.61 |
| 2015-10-31 | 4-H Manchester U B03 | 0 | Aloha United Atletico Black B03 | 4 | 2015 PTT B03 Premier Silver | 2.52 | 2.81 |
| 2015-10-18 | NEU PDX White B03 | 4 | 4-H Manchester U B03 | 1 | 2015 PTT B03 Premier Silver | 3.22 | 1.38 |
| 2015-10-17 | 4-H Manchester U B03 | 2 | NEU PDX White B03 | 3 | 2015 PTT B03 Premier Silver | 1.38 | 3.22 |
| 2015-10-11 | 4-H Manchester U B03 | 3 | 4-H Cruz Azul B03 | 2 | 2015 PTT B03 Premier Silver | 1.72 | 2.70 |
| 2015-10-10 | PCU Red 2 B03 | 4 | 4-H Manchester U B03 | 1 | 2015 PTT B03 Premier Silver | 1.92 | 2.78 |
| 2015-10-04 | ETFC Ajax Black -was Blue B03 | 3 | 4-H Manchester U B03 | 1 | 2015 PTT B03 Premier Silver | 3.92 | 1.85 |
| 2015-10-03 | RVSC Timbers Red B03 | 2 | 4-H Manchester U B03 | 3 | 2015 PTT B03 Premier Silver | 2.17 | 2.37 |
| 2015-09-20 | BSC Portland Black-Legends B03 | 0 | 4-H Manchester U B03 | 1 | 2015 PTT B03 Premier Silver | 2.94 | 2.09 |
| 2015-09-19 | 4-H Manchester U B03 | 0 | Washington Timbers Red B B03 | 0 | 2015 PTT B03 Premier Silver | 1.44 | 3.31 |
| 2015-09-13 | FC Salmon Creek Juventus White B03 | 4 | 4-H Manchester U B03 | 3 | 2015 PTT B03 Premier Silver | 1.58 | 2.69 |
| 2015-09-12 | 4-H Manchester U B03 | 0 | PCU Red 2 B03 | 5 | 2015 PTT B03 Premier Silver | 2.78 | 1.92 |
| 2015-08-16 | 4-H Manchester U B03 | 6 | Capital FC Timbers Red B03 | 0 | 2015 Mt Hood Challenge U12 | 2.57 | 3.19 |
| 2015-08-15 | PCU Red B03 | 2 | 4-H Manchester U B03 | 0 | 2015 Mt Hood Challenge U12 | 4.68 | 1.13 |
| 2015-08-15 | 4-H Manchester U B03 | 0 | ETFC Ajax Black -was Blue B03 | 8 | 2015 Mt Hood Challenge U12 | 1.85 | 3.92 |
| 2015-08-14 | 4-H Manchester U B03 | 2 | Bend FC Timbers Red B03 | 3 | 2015 Mt Hood Challenge U12 | 1.00 | 4.88 |
| 2015-07-12 | ETFC Ajax Black -was Blue B03 | 4 | 4-H Manchester U B03 | 2 | 2015 ETFC Adidas Cup U12 | 3.92 | 1.85 |
| 2015-07-11 | 4-H Manchester U B03 | 5 | Salem Chelsea B03 | 8 | 2015 ETFC Adidas Cup U12 | 2.06 | 3.76 |
| 2015-07-11 | 4-H Manchester U B03 | 0 | ETFC Ajax Black -was Blue B03 | 7 | 2015 ETFC Adidas Cup U12 | 1.85 | 3.92 |

| date | home | | away | | venue | pred.home | pred.away |
|-------------|----------------------|---|-------------------------------|---|----------------------------|------------------|------------------|
| 2015-07-10 | 4-H Manchester U B03 | 5 | ETFC Ajax Red –was White B03 | 1 | 2015 ETFC Adidas Cup U12 | 3.67 | 1.44 |
| 2015-06-28 | 4-H FC Joga B03 | 2 | 4-H Manchester U B03 | 3 | 2015 Capital Cup BU12 Gold | 2.62 | 2.21 |
| 2015-06-27 | 4-H Manchester U B03 | 5 | ETFC Ajax Black –was Blue B03 | 4 | 2015 Capital Cup BU12 Gold | 1.85 | 3.92 |
| 2015-06-27 | 4-H Manchester U B03 | 1 | 4-H Penarol B03 | 5 | 2015 Capital Cup BU12 Gold | 2.64 | 4.53 |
| 2015-06-26 | 4-H Manchester U B03 | 4 | WUSC Barcelona White B03 | 0 | 2015 Capital Cup BU12 Gold | 3.83 | 1.81 |